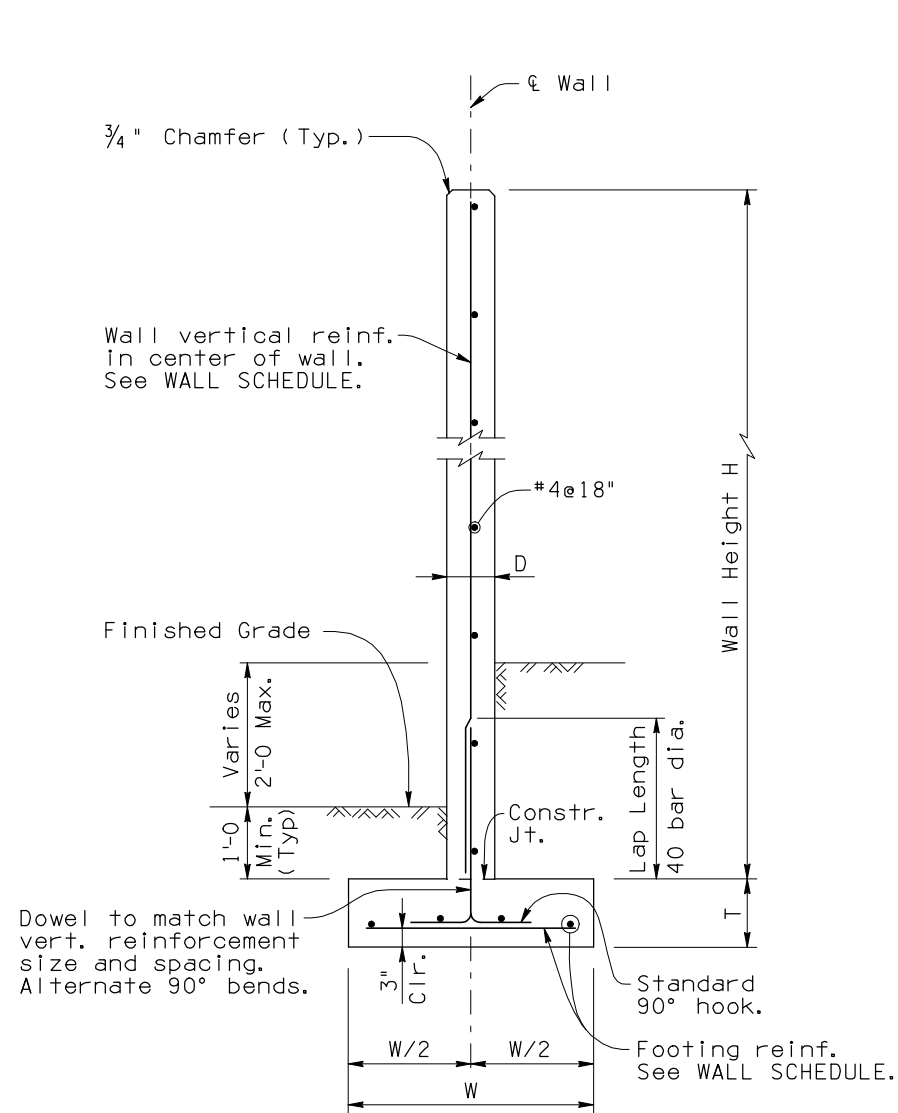
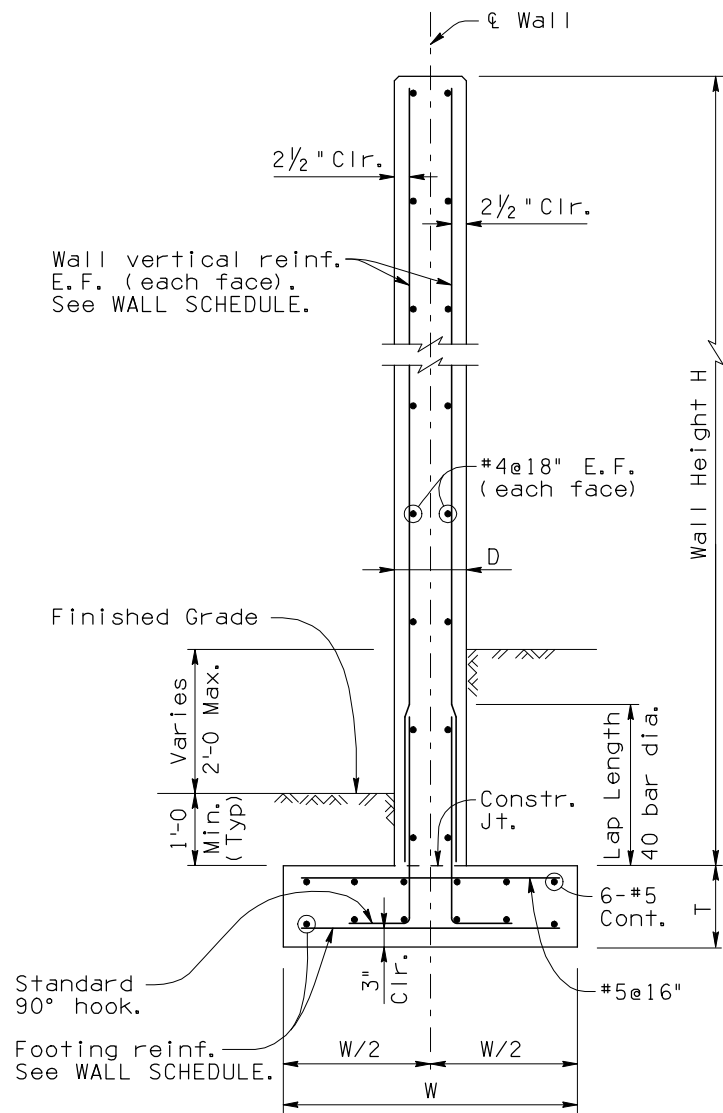


Note to Designer:
The information presented in this Standard Detail has been prepared in accordance with recognized engineering principles and is for general use. It should not be used for specific application without competent professional examination and verification of its suitability and applicability by a licensed professional engineer. Contents within the inner border line shall not be altered.

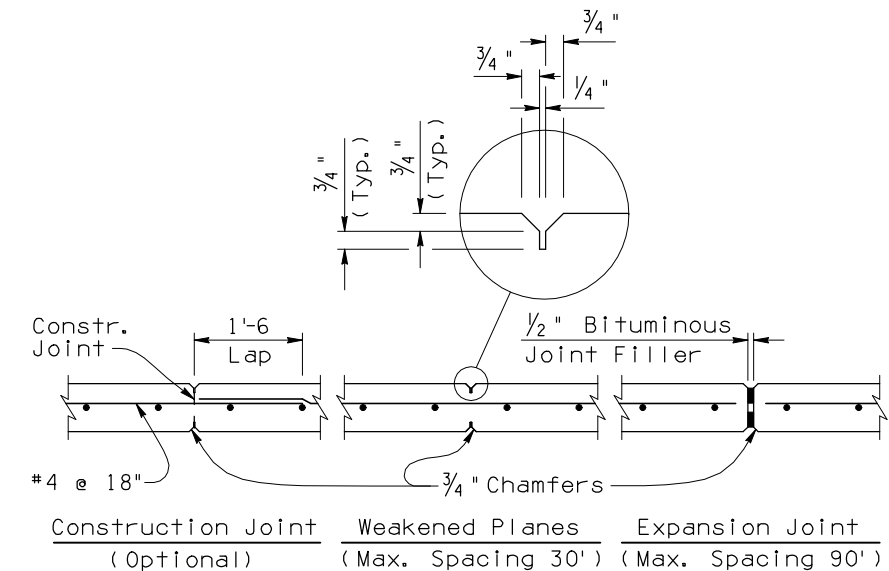
NO.	DATE	DESCRIPTION OF REVISIONS
1	10-99	Original Issue
2	5.U.H. 7-01	Reinforcing General Update
3	5.U.H. 02-07	Reinforcing General Update
4	5.U.H. 4-10	Reinforcing General Update



TYPICAL WALL SECTION
(For Wall Height 0'-0 to 17'-11)



TYPICAL WALL SECTION
(For Wall Height 18'-0 to 26'-0)



TYPICAL JOINT DETAILS
(Detail shown for 8" thick wall)

Wall Height H	Wall Thick D	Ftg. Depth T	Ftg. Width W	Reinforcing			Factored Average Soil Bearing Pressure (psf)
				Wall	Footing		
				Vert.	Bottom Trans.	Bottom Long.	
0'-0 to 3'-11	6"	10"	1'-6	#4@12"	#4@12"	2-#4	1,000
4'-0 to 5'-11	6"	10"	2'-0	#4@12"	#4@12"	2-#4	1,200
6'-0 to 7'-11	6"	10"	2'-6	#4@12"	#4@12"	4-#4	1,300
8'-0 to 9'-11	6"	10"	3'-0	#4@12"	#4@12"	4-#4	1,400
10'-0 to 11'-11	8"	1'-0	3'-6	#4@12"	#4@12"	4-#5	1,500
12'-0 to 13'-11	8"	1'-3	4'-6	#5@12"	#5@12"	6-#5	1,600
14'-0 to 15'-11	8"	1'-6	5'-0	#5@12"	#5@12"	6-#5	1,700
16'-0 to 17'-11	10"	1'-6	5'-6	#5@12"	#5@12"	6-#5	1,800
18'-0 to 19'-11	10"	1'-9	6'-0	#5@12" E.F.	#5@12"	6-#5	1,900
20'-0 to 21'-11	12"	2'-0	6'-3	#5@12" E.F.	#5@12"	6-#6	2,100
22'-0 to 23'-11	12"	2'-3	6'-6	#6@12" E.F.	#5@12"	6-#6	2,300
24'-0 to 26'-0	13"	2'-6	6'-9	#6@12" E.F.	#5@12"	6-#6	2,600

GENERAL NOTES:

Construction Specification - Arizona Department of Transportation Standard Specifications for Road and Bridge Construction, latest Edition.

Design Specifications - AASHTO LRFD Bridge Design Specifications, 4th Edition 2007.

Wind Velocity 80 MPH, Exposure C.
Wind pressure 18.0 psf for wall height under 12'-0.
Wind pressure 25.0 psf for wall height over 12'-0.

All Concrete shall be Class "S" (f'c = 3,000 psi).

Reinforcing steel shall conform to ASTM Specification A615. All reinforcing shall be furnished as Grade 60 (fy = 60,000 psi).

All bends and hooks shall meet the requirements of AASHTO LRFD Article 5.10. All bend dimensions for reinforcing steel shall be out-to-out of bars. All placement dimensions for reinforcing steel shall be to center of bars unless noted otherwise.

All reinforcing steel shall have 2 inch clear cover unless noted otherwise.

Chamfer all exposed corners 3/4" unless noted otherwise.

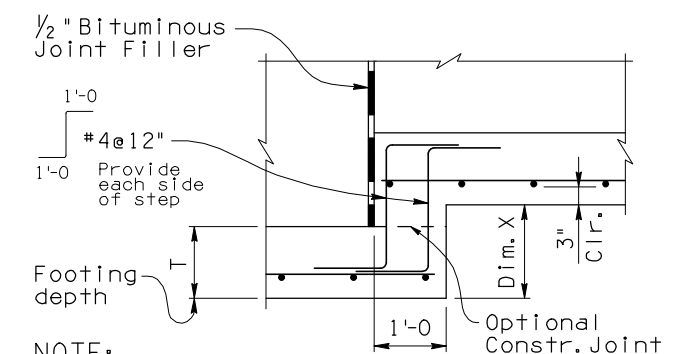
Compact backfill for footing and wall base minimum 95 percent of ASTM D698 maximum dry density.

See Project Plans for wall layout, top of footing and finished grade elevations, footing step and wall joint locations. Construction Joints shall match the locations of weakened plane joints. See Project Plans for wall surface treatment. Increase the wall thickness for any treatment depth greater than 3/4".

Pay item is measured as wall height H times length of wall, and pay item includes all labor and materials for excavation, backfill, concrete footing and wall with reinforcements.

Dimensions shall not be scaled from drawings.

Item No. 9140136 SOUND BARRIER WALL (CONCRETE)
Measure: Square Foot



NOTE:
See Project Plans for location of footing steps and Dim. X.

FOOTING STEP DETAIL

DESIGN APPROVED <i>Shafiq U. Hasan</i>	ARIZONA DEPARTMENT OF TRANSPORTATION INTERMODAL TRANSPORTATION DIVISION BRIDGE GROUP STRUCTURE DETAIL		
APPROVED FOR DISTRIBUTION <i>Teon A. Nehme</i>	SOUND BARRIER WALL (CONCRETE)		
ROUTE	PROJECT NO.	FA NO.	DRAWING NO. SD 8.01
LOCATION	SHEET NO.		OF